

---

**BREITLÄNDER**

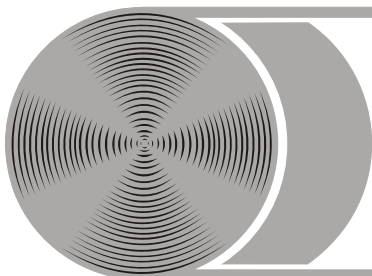
Eichproben + Labormaterial GMBH

Hans-Sachs-Str. 12 - D-59077 HAMM

Tel. 02381/404000, Fax 403189, e-mail: [mail@breitlander.com](mailto:mail@breitlander.com)

---

**autofluxer®** - an automatic fusion machine, based on the former patents and the experience from 300 [Schoeps-machines](#) installed worldwide and developed to present state of technique. Machine control and safety check via PLC, compact, modular in a practical design. Fusion for XRF and for solution analysis, incl. peroxide fusion in one machine. Multi level machine access possible. The fusion system with oxygen enriched flames you find with several machines on the market; the combination of proven burner technology, PLC function and safety control in a small footprint machine design you only find with the autofluxer®.



# BREITLÄNDER

Eichproben + Labormaterial GMBH

Hans-Sachs-Str. 12 - D-59077 HAMM

Tel. 02381/404000, Fax 403189, e-mail: mail@breitlander.com

## autofluxer®

### autofluxer

An automatic fusion machine with innovative features



#### AUTOFLUXER

- **Compact automatic fusion machine for XRF, ICP + AAS**  
up to 4 stations XRF and 4 stations ICP/AAS within a footprint of only 18.5 square inch
- **Most simple operation**  
few, clearly arranged controls, function display, status indicator in field of vision on top panel

*The application range of the autofluxer stretches from the mining to the processing industry of minerals, cements, glasses, ceramics, slags, and many other inorganic products*

# Technical Features

**autofluxer**<sup>®</sup>

www.breitlander.com



One automatic machine for XRF beads and additional solution samples for ICP/AAS

Restricted access capability for different technical levels of expertise for the operator or the expert

Computer controlled pre-warming, pre-melting, agitation, main-melting and cooling cycles

Manual program override during operation for flexibility in new sample preparation methods

Fixed parameter setting for any routine applications by individual memory chips possible



Individually controlled gas burners, oxygen enriched for temperature range of 800-1600°C

Mould sensors for each station, preventing unintended start of melting cycle without mould, takes 32 or 40mm moulds

Simple self locking crucible holder - no mechanism, no pneumatics

Advanced agitation function - circular, slightly vertical, forward, backward, pausing, time and speed adjustable

Defined positioning of crucible over burner for melting and pouring into mould or beaker



Lockable temperature control unit prevents of unintentional or non-authorized manipulation

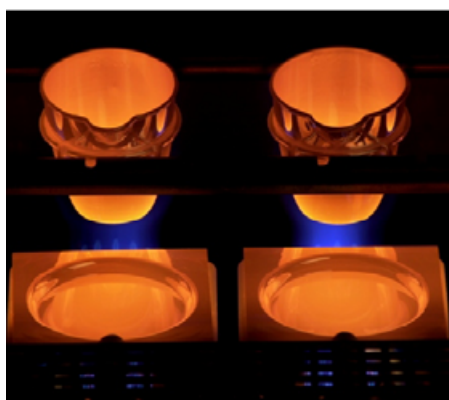
ICP/AAS solution module with up to 4 stations easily attachable to XRF unit without any tools

Solution module with integrated individual speed controlled magnetic stirrers, waterproof, 150ml PTFE beakers and stirrers

Program reset any time via start/stop button - independent of power or emergency stop

Built in air pressure regulator with integrated water trap and visible pressure gauge

Operational safety by minimum of movable parts, emergency shut off, gas leakage shut off, overheating shut off, lockable flame control unit, XRF-function stop via mould sensors, flame control by temperature sensors, protected start button



Technical data: 110-230VAC, 50-60Hz, 150W, mass 29kg, 18.5x18.5x9.8" (47x47x25cm) supply: LPG 50mbar, alternative natural gas 25-50mbar, air 6bar, oxygen 5bar

*The autofluxer fusion machine refines with technical innovations the principles of the classical German Schoeps machines with several hundred successful applications*

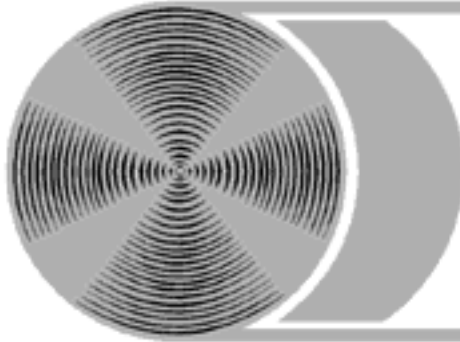
*Because of its high versatility for fusion as solid or liquid samples the autofluxer is the right choice for laboratories with changing applications or for research working in the open mode. On the other hand the autofluxer settings can easily be restricted in operational interference, which is a clear advantage for the routine laboratory or for non-expert handling*

Made in Germany by  
**BREITLÄNDER GmbH**  
Founded 1972

Base models: autofluxer 2 with 2 stations XRF  
autofluxer 4 with 4 stations XRF

autofluxer is a registered  
trademark of Breitländer GmbH

Solution module add on for base models available with 1, 2, 3 or 4 solution stations  
Later upgrading for up to 4 solution stations possible anytime



# BREITLÄNDER

## Eichproben + Labormaterial GmbH

Hans-Sachs-Str. 12, D-59077 HAMM, Germany  
Tel (0)2381/404000, Fax -/403189, e-mail:mail@breitlander.com

### Platinum ware

The autofluxer® fusion machine takes standard Pt-ware of alloy 95/5% Pt/Au, System Schoeps, which is used on the original Schoeps fusion machines as well as on machines of type HD-VAA, HD-Vulcan.

We supply Pt ware of highest quality – 'Made in Germany' – all current articles from stock at daily set prices as per London metal exchange. Prices are calculated on fluctuating noble metal prices and manufacturing costs. We purchase your old Pt ware and counterbalance with your new material.

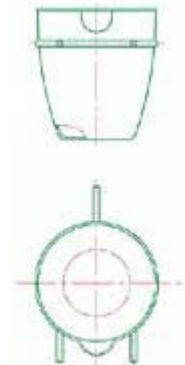
You can have special dispersion hardened Pt-crucibles, with prolonged life time in high temperature applications of up to 1700°C, showing excellent corrosion resistance and lower re-crystallization properties.

We offer 3 standard types of crucibles with dimensions: upper Ø 34mm, lower Ø 20mm, height 38mm, bottom wall thickness 0,5mm and 0,3-0,34mm with crucible type TG1.

- AFX-TG1 Crucible without enforcement rings, weight approx. 25g
- AFX-TG2 Crucible with enforcement ring at holding pins, approx. weight 42g
- AFX-TG3 Crucible with double enforcement rings at pins and rim, approx. weight 45 g

We recommend crucible AFX-TG3 because of its robustness and life time.

Pictures and drawings show crucible AFX-TG3 with 2 enforcement rings and mould AFX-KK41 for 40mm beads.



We offer 3 standard types of moulds with a depth of 3mm (max. thickness of bead) and a wall thickness of 0,8mm; crucibles with wall thickness of 1mm available, can be used on the autofluxer®.

- AFX-KK31 Tapered moulds for beads 29/31mm Ø, weight approx. 29g
- AFX-KK34 Tapered moulds for beads 32/34mm Ø, weight approx. 31g
- AFX-KK41 Tapered moulds for beads 39/41mm Ø, weight approx. 46g

